

The Development of a Healthy Baby

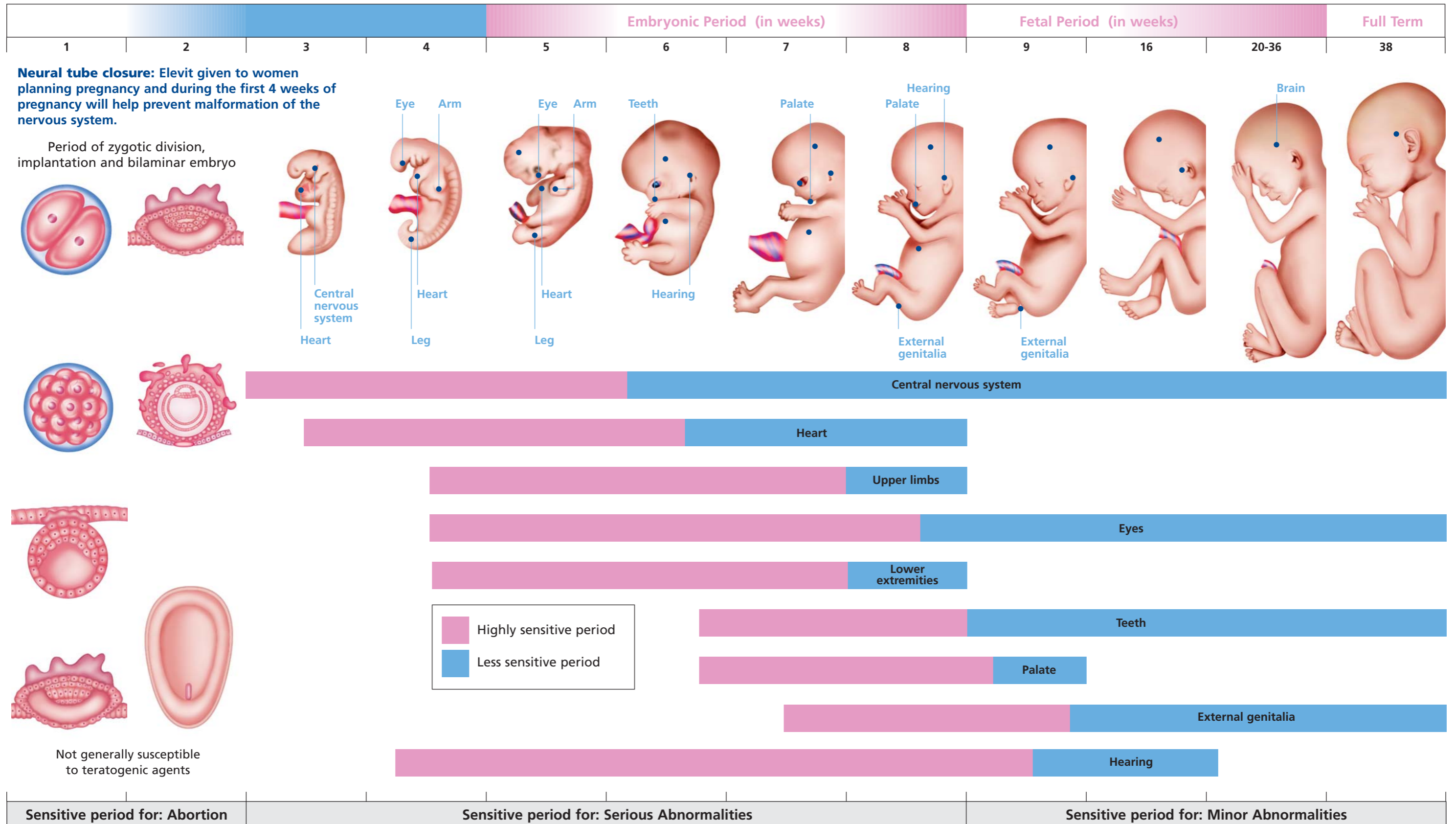


Figure 1: Schematic illustration of critical periods in human prenatal development. Pink denotes highly sensitive periods when major defects may be produced (e.g., amelia, absence of limbs). Blue indicates stages that are less sensitive to teratogens when minor defects may be induced (e.g., hypoplastic thumbs).

References 1,2,3



Science For A Better Life

Reference: 1. Roche-Lexikon Medizin, 4. Aufl., Urban & Fischer, München 1998: 459. 2. Roche-Lexikon Medizin, 4. Aufl., Urban & Fischer, München 1998: 544. 3. Moore, KL. Before we are born: essentials of embryology and birth defects, 5th ed. W.B. Saunders Company, Philadelphia 1998: 166. ©ADworks 11116



Helps build healthy babies.